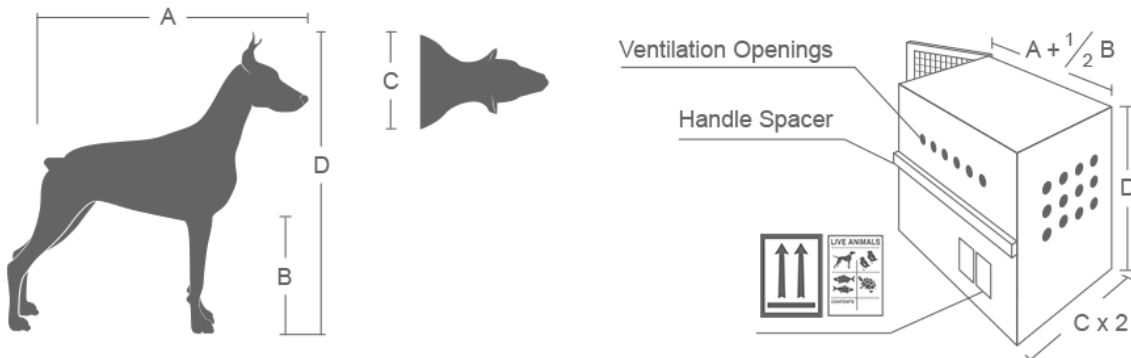


## Container Requirement

- The container must be made of rigid, solid plastic, with only one door on the container.
- The animals must be able to stand, lie down, and turn comfortably without its head touching the roof of the container.
- The Size reference as following:



- Only one door on the container
- Ventilation openings at 3 sides
- Absorbing sheet at bottom
- Cable tie applied at 4 corners to the door

Accepted

Nuts/bolts



Not accepted

Twist lock

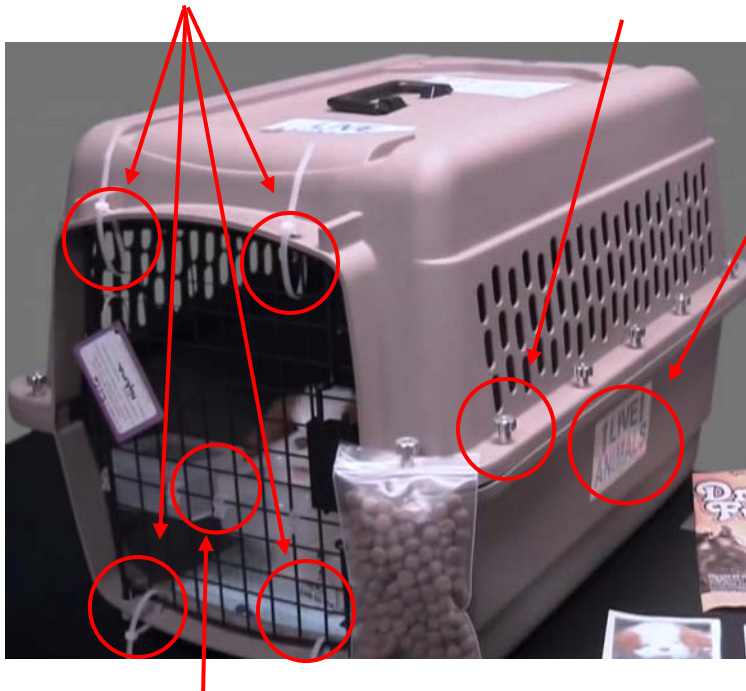


Not accepted

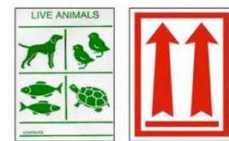
Snap lock



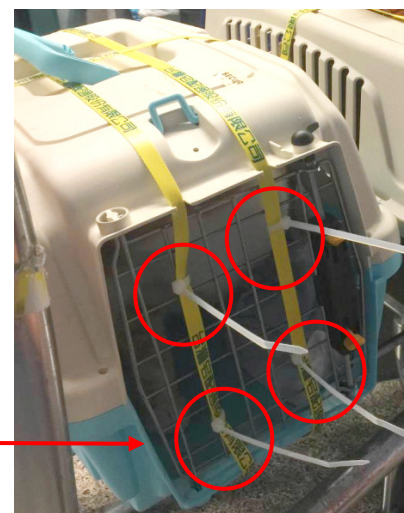
Container assembled by nuts and bolts



- Live animal and orientation label



- Affixed food and water container
- Alternative way to affix cable tie at 4 corners by using baggage strapping service



## Dogs & Cats Stocking Density

### IATA LAR 8.2.7 Stocking Density Guidelines for Dogs and Cats

- Age > 6 months (adult)
  - Weight  $\leq$  14kg, in comparable size, Max 2 animals in the same container.
  - Weight > 14kg, Max 1 animal per container.
- Age  $\geq$  8 weeks but  $\leq$  6 months (see CI-06)
  - Weight  $\leq$  14kg, from same mother, Max 3 animals in the same container.
  - not from same mother, see above  
(Weight  $\leq$  14kg Max 2 animals , Weight > 14kg Max 1 animal)

### USG-04

- Age > 6 months , Max 1 dog or cat per container.
- Age  $\geq$  8 weeks but  $\leq$  6 months (see CI-06)
  - Wt > 9kg, Max 1 animal per container.
  - Wt  $\leq$  9kg, Max 2 animals (in comparable size) in the same container.

### CI Variation in LAR

CI-06 Puppies and kittens under (<) 10 weeks old will not be accepted for carriage.

Note: Dogs and cats must not in same container